



**SHEERLINE**<sup>®</sup>  
ALUMINIUM WINDOWS AND DOORS

*Classic*  
range



Security has never looked so good

*Classic*  
range



# Transform your home with our high performance aluminium windows

Choosing the right windows for your home is an important decision. An investment that makes a real difference to how warm and secure you feel; as well as changing the look of your property. This is why we have designed the Classic system from the ground up. Building on years of experience, we've incorporated many new innovative ideas; creating a warmer, slimmer and more secure window system. Designed for discerning homeowners that aren't willing to compromise, our windows are tailored to those who demand more for their home.

Built around an innovative Thermavic® multi-chamber thermal break, our windows use a patented construction method that offers unsurpassed levels of security. Creating windows that are strong and durable, yet with slim frames that maximise the light flooding into your home. Sheerline aluminium windows are also available in a wide range of colours, letting you express your home's character.



Designed to combine the latest technical innovations with peerless aesthetics

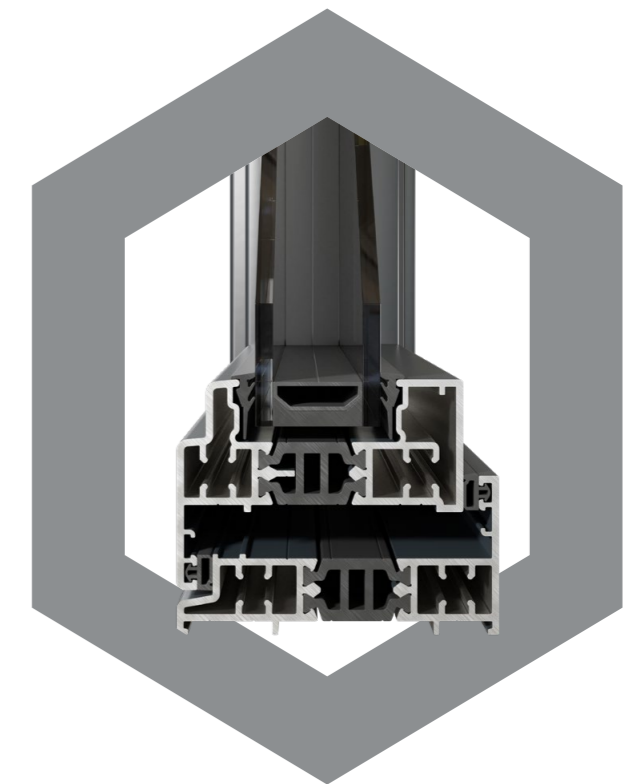




## With unrivalled security built into the heart of every window

The innovative construction of the Classic window system eliminates the need for separate glazing beads – often an area of weakness in traditional window design. Instead our patented† corner jointing method securely locks the glass away within a completely sealed unit. This coupled with our high security multipoint locking and unique

hinge protectors creates unparalleled levels of security. No window in its class is as secure. All Sheerline windows carry PAS24:2016 enhanced security accreditation, so if you are looking for stylish aluminium windows with extra peace of mind as standard – then we have you covered.



†Patent registration number: GB2569209

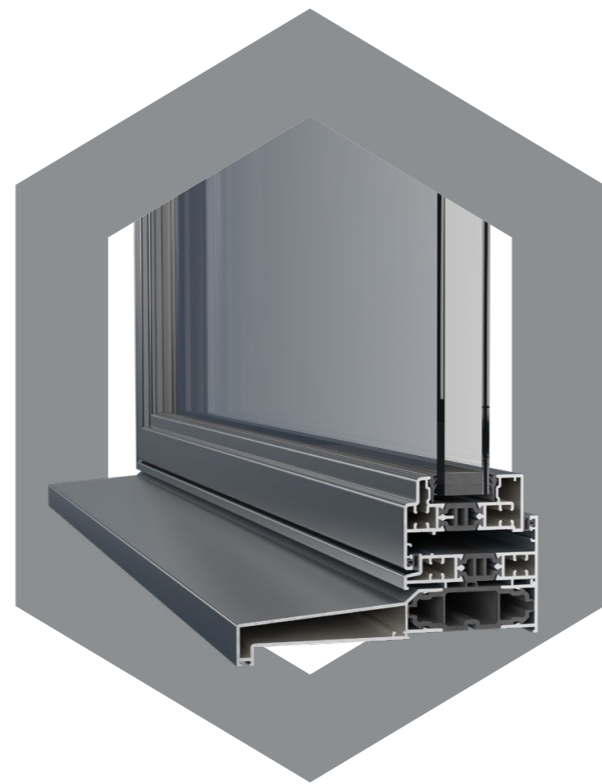
# Thermavic® technology helps keep you and your home snug and warm

Cold, crisp lines on the outside hide away our innovative Thermavic® multi-chamber thermal design, helping keep you and your property well insulated against the worst of the UK weather. This closed-cell, insulating chamber acts as a thermal break and works in conjunction with our high performance double glazing to create class leading thermal performance, far superior to traditional polyamide thermal breaks. Sheerline's cills also feature this same technology coupled with innovative in-built weather sealing that keep draughts and rain safely outside.

## 1.4 U-value

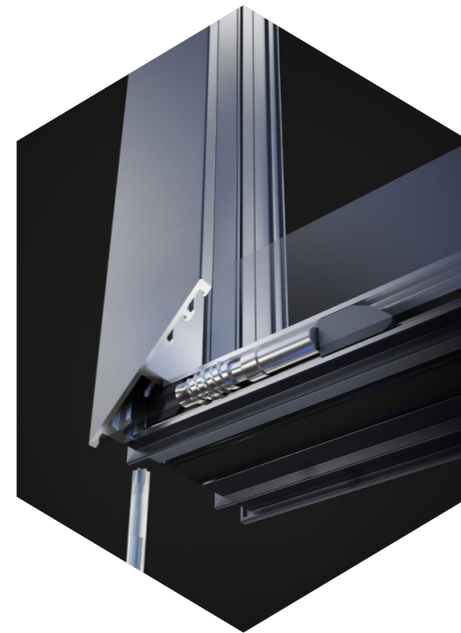
W/(m<sup>2</sup>K)  
Double glazed

Thermal transmittance, also known as a U-value, measures the rate of transfer of heat. The better-insulated a window is, the lower the U-value will be.





With great looks from every angle - due to our unique construction method



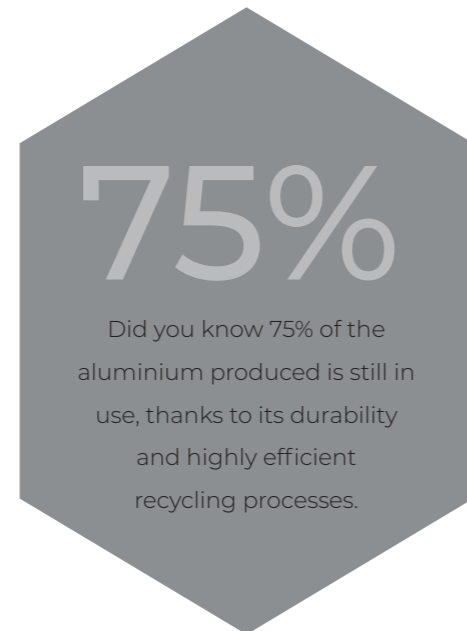
The ultra slim 59mm sightlines of the innovative Classic window system maximises the light flooding into your home, creating a refined architectural look. While our patented construction method – using threaded screws to bind corners tightly together in perfect unison – creates perfect run through mitres on internal joints, doing away

with the unsightly junctions of square cut beads seen on ordinary aluminium windows. We've also designed out the stepping of misaligned corners, allowing each Sheerline window to be individually hand tuned to perfection. Leaving you with the perfect balance of understated refinement and exacting quality standards.

# Created from one of the most sustainable materials on the planet

Made from the most recycled and abundant metal in the Earth's crust and produced in the most energy efficient aluminium window facility in the UK, all Sheerline products are manufactured in the most sustainable way possible. Our state-of-the-art, energy efficient SMS HYBEX press delivers energy savings of up to 55% compared to

traditional presses. The design of our Classic system also vastly reduces fabrication waste, minimising the unnecessary consumption of raw material and helping reduce your window's carbon footprint. This coupled to the high level of energy efficiency built into every window helps build towards a greener future for all.





# All available in a range of colours and finishes to suit every home

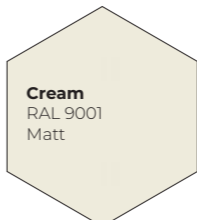
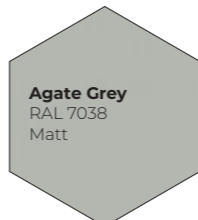
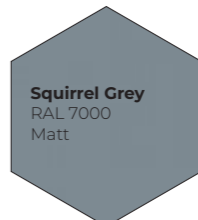
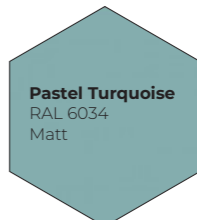

Our Classic range of windows are available in eight powder coated, matt colours, with the option of choosing a different colour for the interior to help

you find the look that is right for your property. A further three anodised finishes are available for the ultimate durable and stylish finish.

## TRADITIONAL COLOURS

 <b>Pure White</b> 9010 Matt	 <b>Anthracite Grey</b> 7016 Matt	 <b>Jet Black</b> 9005 Matt
---	--	--

## CHARACTER PREMIUM COLOURS

 <b>Cream</b> RAL 9001 Matt	 <b>Agate Grey</b> RAL 7038 Matt	 <b>Squirrel Grey</b> RAL 7000 Matt	 <b>Pastel Turquoise</b> RAL 6034 Matt	 <b>Chocolate Brown</b> RAL 8017 Matt
---	--	---	--	---

## PARAGON ANODISED FINISH

 <b>Natural Silver</b> Anodised	 <b>Mid Bronze</b> Anodised	 <b>Black</b> Anodised
--	--	---

*Please note; due to the nature of the manufacturing process and the differences in the methods used to represent these colours in print we cannot guarantee an exact colour match with the colours shown. The RAL colour references are also provided as a guide only.*



# With a choice of traditional or contemporary styling

Sheerline aluminium windows are available in a choice of two opening sash styles; 'Stepped' – inspired by traditional steel windows – and 'Contemporary' with a more modern minimalist aesthetic. Both styles are available in either our standard outer frame, or as a 'Flush' option that brings both the perimeter and the opening sash perfectly in-line with each other. You can draw on our experience if required to find the one that resonates best with your home's character.





# Proudly designed and manufactured in the heart of the UK

We are on a mission to transform what customers expect from aluminium windows and doors. From design and testing, to the manufacture of every major component at our state-of-the-art facilities, we are passionate about each element that goes into producing the Sheerline window system.

Delivering windows that operate, perform and look exceptional, keeping you warm and secure for many years to come.



*Information correct at time of publication.  
Sheerline reserve the rights to alter product  
specifications without prior notice. E&OE.*

